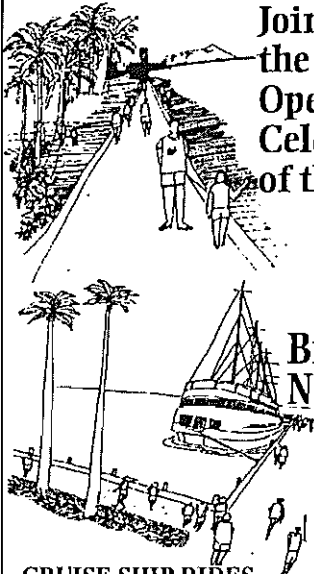


# Kakaako Connection

A Publication of  
HAWAII COMMUNITY  
DEVELOPMENT AUTHORITY

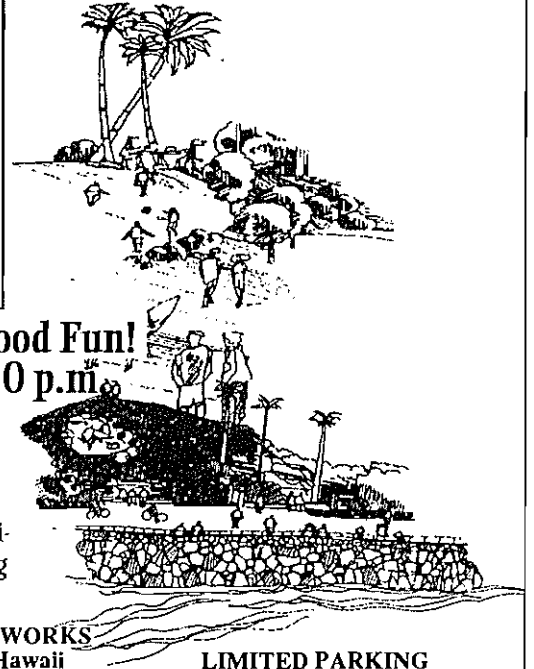


A Special October 1992 Issue



Join us for  
the Grand  
Opening  
Celebration  
of the...

## Kakaako Waterfront Park FESTIVAL



Bring the Entire Family for a Day of Good Fun!  
November 8, 1992 9:30 a.m. to 7:00 p.m.

Free Admission and Alcohol Free!

...In the breathtaking environs of Hawaii's newest public park and featuring a gala lineup of top Hawaiian, Jazz and Rock music entertainers and a dazzling day-long program of children's entertainment!

### CRUISE SHIP RIDES

Free cruise rides courtesy of Paradise Cruise, Ltd. aboard the Star of Honolulu to Waikiki coast & Pearl Kai II to Hawaii Maritime Center.

### HAWAII MARITIME CENTER

Free admission to Center. Explore the Hokulea and the Falls of Clyde.

### COMPANY MASCOTS

appearances for the keikis

### E.K. FERNANDEZ "KEIKI" RIDES

Free with Star Market Receipts

### KITE FANTASY

Workshop & Demonstrations

### AERIAL FIREWORKS

DISPLAY by Hawaii Pyrotechnics to end the evening!

### HAWAII CHILDREN'S MUSEUM

Inter active, hands-on activities for the keikis.

### LIMITED PARKING

at the park. Additional free parking on-street, Restaurant Row, Pohukaina School, Bank of America Bldg. Free parking shuttle courtesy of Trans Hawaiian.

### JAZZ/ROCK STAGE

10:30 - 11:30 a.m. Nueva Vida  
11:30 - 11:45 a.m. Rainbow Dancers  
11:45 - 12:30 p.m. Fabulous Classics  
12:30 - 12:45 p.m. Rainbow Dancers  
12:45 - 1:30 p.m. Gabe Baltazar/  
Jimmy Borges  
1:30 - 1:50 p.m. Rainbow Dancers  
1:50 - 2:40 p.m. Sad Happy  
(Metal Jazz from Seattle)  
3:00 - 3:45 p.m. The Jive Sisters  
4:00 - 5:00 p.m. Honolulu

### CHILDREN'S/YOUTH STAGE

9:30 - 9:50 a.m. Opening Ceremonies  
10 - 11 a.m. Royal Hawaiian Band  
11:30 - 12 noon Jimbo the Magical Clown  
12:30 - 1 p.m. Curtis Kam/Magician  
1:20 - 1:50 p.m. Big City Dancers/  
Pam Sandridge  
2:05 - 2:35 p.m. Julie McBane/Mime  
2:50 - 3:20 p.m. Curtis Kam/Magician  
3:45 - 4:15 p.m. Jimbo the Clown  
4:30 - 5:00 p.m. Big City Dancers/  
Pam Sandridge

### HAWAIIAN STAGE

12-1 p.m. Ho'okena  
1 - 2 p.m. The Brothers Pahinui  
(featuring Led Ka'apana)  
2 - 3 p.m. Sonny Chillingworth  
& Friends  
3 - 4 p.m. Mana'o Company  
4 - 5 p.m. Loyal Garner  
5 - 6 p.m. Kapena  
6 - 7 p.m. Makaha Sons of Niihau  
(featuring Moe Keale)



Sponsored  
by



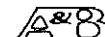
KAMEHAMEHA  
SCHOOLS/  
BISHOP ESTATE



PARADISE  
CRUISE, LTD.



HAWAIIAN  
ELECTRIC  
INDUSTRIES, INC.



ALEXANDER &  
BALDWIN, INC.

FIRST HAWAIIAN BANK  
HAWAII EXPLOSIVES &  
PYROTECHNICS  
HAWAIIAN DREDGING  
& CONSTRUCTION, INC.  
HAWAIIAN TELEPHONE CO.  
PAN-PACIFIC CONSTRUCTION, INC.  
PACIFIC RESOURCES, INC.  
STAR MARKET  
STATE PARKS DIVISION, DLNR  
STRAUB CLINIC  
TRANS HAWAIIAN

This special issue was published to acquaint Hawaii's residents with the Kakaako Waterfront Park, the centerpiece of the State's Waterfront Revitalization Program. Inside this issue is a map of the Park with important points of interests, a look at the State administration's vision for the Honolulu Waterfront, and a peek at planned future additions to the Park's first phase.



**KAKAAKO WATERFRONT PARK**  
*"Where Honolulu Greet the Sea"*

# POINTS OF INTEREST

## **1** *Pu'u Kaka'ako*

Arrived at via a winding path from the park entry, this park lookout offers panoramic views of Honolulu's southern coast, from Diamond Head to the Ewa Plain. A compass inlaid into the lookout's central seating provides comfort to disoriented visitors.

## **2** *Waterfront Promenade*

Extending 1/2 mile from the entrance of Kewalo Basin to Fort Armstrong, this esplanade provides - for the first time in over 40 years - unlimited public access to Honolulu's central waterfront. When completed, the tapa-patterned promenade will form a continuous shoreline link from Ala Moana Park to Aloha Tower.



## **3** *Observation Areas*

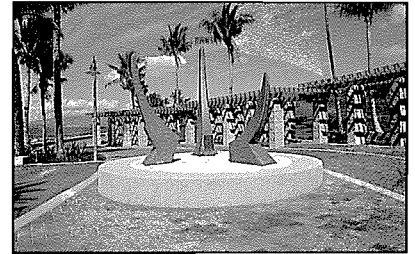
Strategically located viewing areas enable park users to fully experience Hawaii's ocean heritage, through the sights and sounds of commercial boating and shipping traffic at Kewalo Basin and Honolulu Harbor and the array of off-shore recreational surfing, fishing and diving activities fronting the park.

## **4** *Ocean Access*

Protected stairways with handrails located in the vicinity of "Point Panic", "Flies" and "Incinerators" surfing areas allow safer water entry and exit to surfers and other ocean sport enthusiasts.

## **5** *Vent System*

Constructed over portions of a former municipal landfill, the park features a number of large, stovepipe structures which are part of a sophisticated system designed to capture and safely vent release from still-decomposing waste buried deep below the surface.



## **6** *Amphitheater*

Set among the park's rolling hills is an outdoor performance area designed to accommodate general community events. This facility has an informal seating capacity of 2400. A larger, multi-purpose amphitheater is scheduled for development in the future phases of the park.

## **7** *Arts in the Park*

Works of public art are being carefully integrated into the park landscape. "Lahui," a bronze sculpture by local artist Sean Browne, is the first work to be commissioned; meaning "to gather together." This piece celebrates the reuniting of Hawaii's people with the sea.

# Realizing the Vision THE KAKAAKO WATERFRONT PARK,

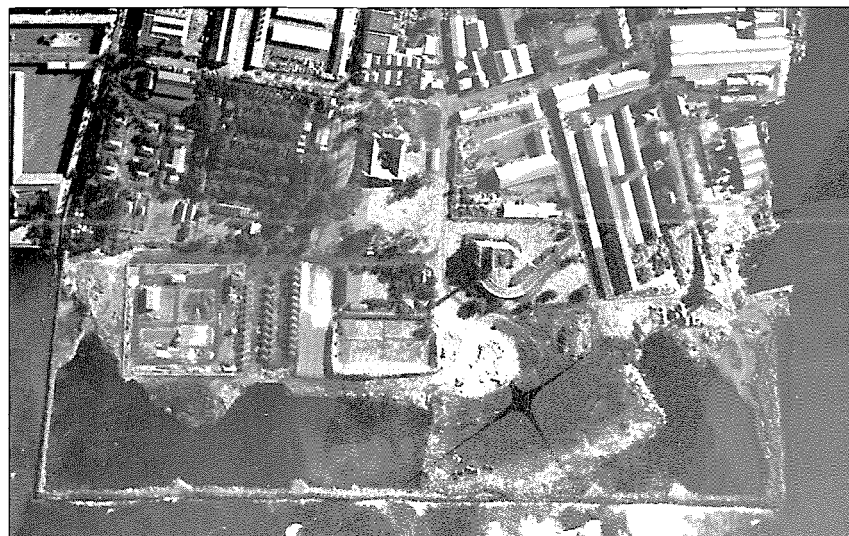


Kakaako Waterfront Park site, circa 1948

Photo by R.M.Towill Corporation

*“The time has come to again enjoy our waterfront as a people-oriented gathering place, to introduce new forms of life into our vital, yet dormant waterfront areas...For the past 20 years, there has been talk of harvesting the fruits of waterfront development. The time has come to turn those dreams into reality. The Honolulu Waterfront is ripe for change.”*

*Governor John Waihee*



Kakaako Waterfront Park site, circa 1955

Photo by R.M.Towill Corporation

**W**ith these words, Governor Waihee in September 1977 launched the State’s waterfront revitalization program, setting forth a dynamic vision and aggressive strategy to capitalize on the enormous potential of the Honolulu waterfront to accommodate a variety of new recreational, cultural and commercial activities.

A key part of this vision was the reopening of major portions of the waterfront that had been long neglected or closed to public access. The “Kakaako Waterfront,” that area between Ala Moana Park and Honolulu Harbor, was identified as the centerpiece of this unprecedented redevelopment effort.

Buoyed by strong legislative support, the Hawaii Community Development Authority (HCDA) embarked on an accelerated program to transform the area into a vibrant, new “Central Park” for Honolulu. The cornerstone of the transformation of the Kakaako Waterfront was laid in 1990 with HCDA’s completion of the four-acre Kewalo Basin Park, located at the rear of Kewalo Basin. This scenic shorefront park has rapidly become a favorite picnic spot for Honolulu’s residents. And now, with the completion of the first 30-acre phase of the Kakaako Waterfront Park, the Governor’s vision of creating a “people-oriented gathering place” along the waterfront is nearing reality.



Kakaako Waterfront Park site, circa 1974

Photo by Air Survey Hawaii

# "Where Honolulu Greeted the Sea"

The reclaiming of the Kakaako Waterfront for the use and enjoyment of Hawaii's residents is a fitting conclusion to the historic progression of uses that have occurred in the area. At one time the park site served as an inland waterway for ships which would anchor in the area now occupied by Queen Street. Then, from 1927 through most of the 1970s, the site operated as a depository for ash from municipal trash incinerators and a dump for excess refuse. The site was closed as a municipal landfill in 1987, but continued to be used as a public dumping ground until it was closed for redevelopment by the HCDA in 1990.

In previewing the Kewalo Basin Park and the Kakaako Waterfront Park, local "Ocean Watch" columnist Susan Scott observed: "I felt emotion here...I finally discovered why I felt so moved: These places felt like they were built specifically for me and the others who live here. I felt proud of them. They were mine...This new appreciation of our city's magnificent waterfront is something to celebrate."

## *In the Future...*

**A**s much as 40 additional acres of park space is being planned in the second phase of the Kakaako Waterfront Park, to be constructed between 1994 and 1998. The Hawaii Community Development Authority also anticipates special cultural and educational facilities to be located in the area generally between Ilalo Street and the first phase of the Kakaako Waterfront Park.

Here are some of the planned highlights of the Park.

- o The historic Ala Moana Sewage Pump Station will be renovated and transformed into a Heritage Education Center by the Historic Hawai'i Foundation.
- o The Children's Museum of Arts, Culture, Science and Technology plans to open a 37,000-square-foot museum facility on the Kewalo Incinerator Building site located at Olomehani and Ohe Streets.
- o The feasibility of establishing an outdoor amphitheater (with 10,000-12,000 seat capacity) is being considered. The facility would provide an attractive showplace for a variety of concerts, including those currently not allowed at

- the Waikiki Shell.
- o Under study for the area makai of Fort Armstrong is the development of a new 17-acre beach park with easy access to the water and spectacular views of the Honolulu waterfront.
- o A performing arts center which would serve a range of community performance groups is under consideration.
- o To provide a prominent display of local visual arts, crafts and historical artifacts, an exhibition center is in the planning stages.

The second phase of the park will also embrace active recreation, such as softball and soccer, and will feature pedestrian and bicycle path "greenways" which will connect the park to the surrounding areas.

Longer-range plans include greenway extensions into the Fort Armstrong area, connecting the park to an entertainment area and new commercial developments. Upon completion, the entire Kakaako Waterfront Park will span 60-70 acres, serving Honolulu and Hawaii as a premier gathering place enriched by cultural and educational resources.

**THE KAKAAKO CONNECTION**  
is a publication  
produced by the  
**HAWAII COMMUNITY  
DEVELOPMENT AUTHORITY**

**John Walhee**  
Governor  
**Gary L. Caulfield**  
Chairman  
**Sam Callejo**  
**Richard B.F. Choy**  
**Mufi Hannemann**  
**Rex D. Johnson**  
**Stanley K. Kawaguchi**  
**Yukio Takemoto**  
**Robert Takushi**  
**Susan Todani**  
**R. Brian Tsujimura**  
**T. C. Yim**  
**Michael N. Scarfone**  
Executive Director

This newsletter is printed on recycled paper.



**HAWAII COMMUNITY  
DEVELOPMENT AUTHORITY**  
677 Ala Moana Blvd., Suite 1001  
Honolulu, Hawaii 96813  
Telephone: (808) 587-2870  
Fax: (808) 599-2613

**BULK RATE**  
U.S. Postage  
**PAID**  
Honolulu, Hawaii  
Permit No. 1223